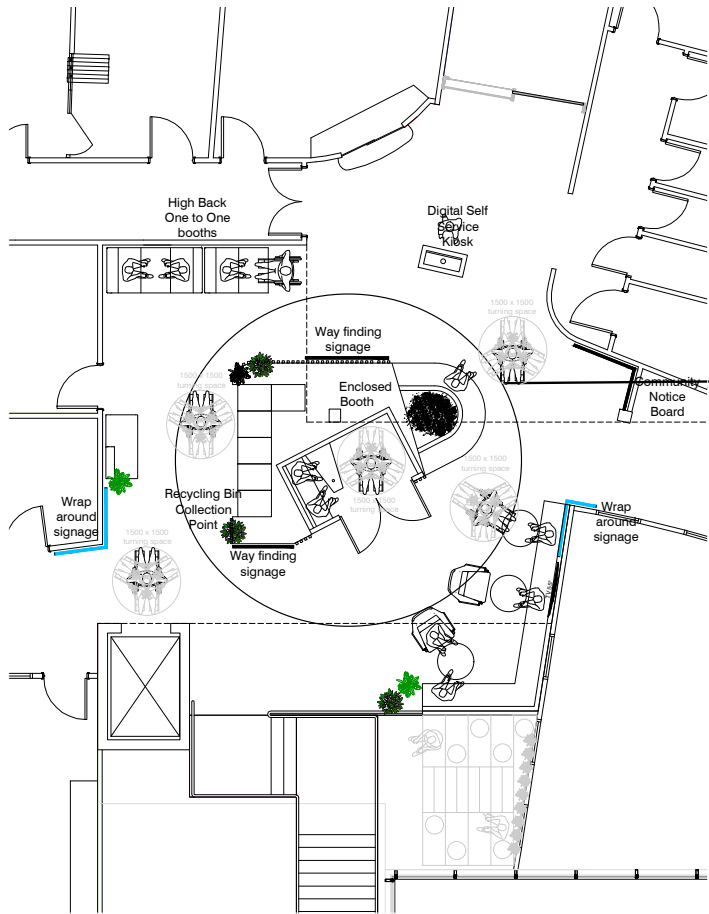




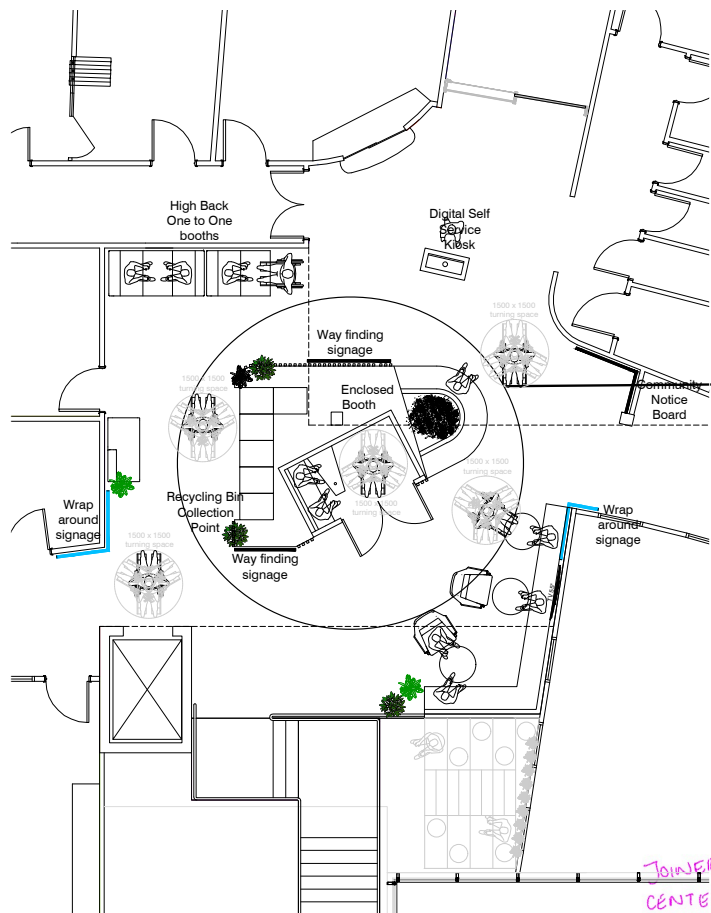
DEVELOPED DESIGN &

- High-level budget costs
- Detailed drawing
- Layout and accessibility



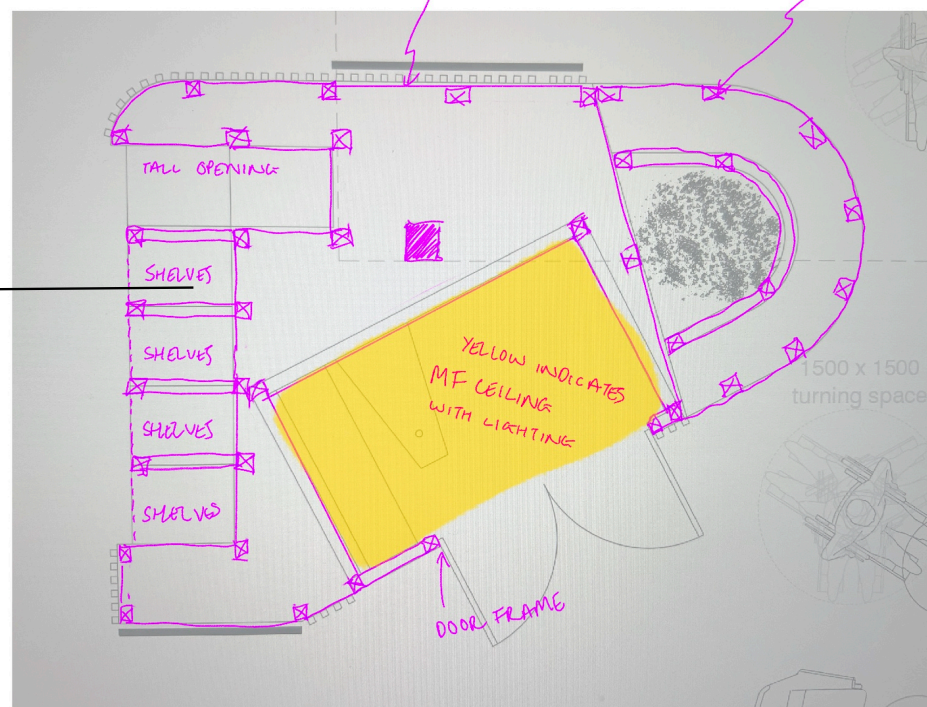
PROPOSED GROUND FLOOR LAYOUT
1:50



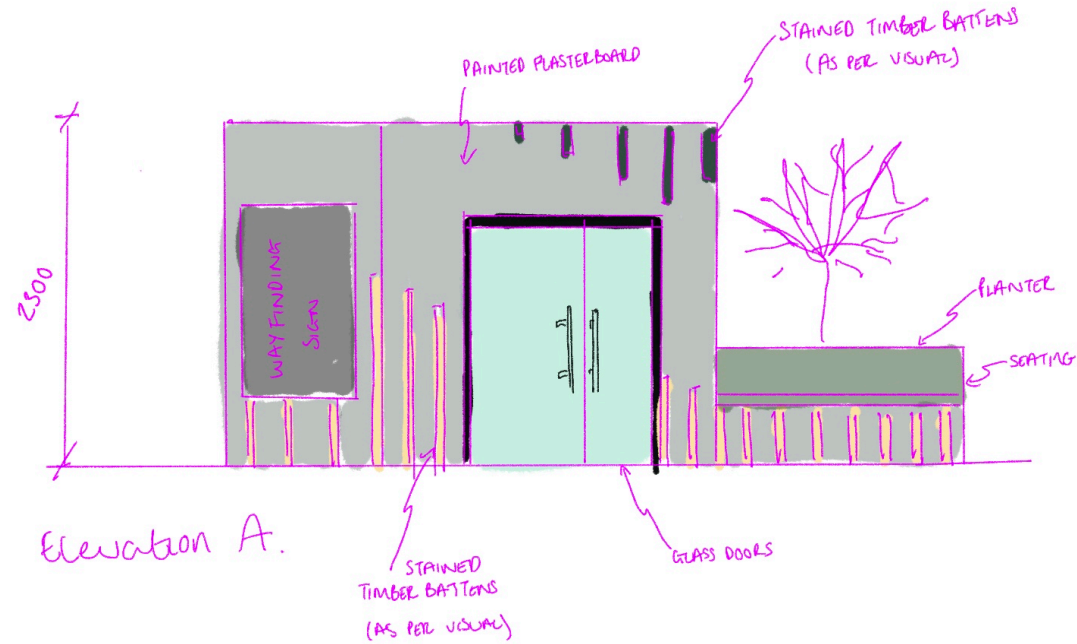
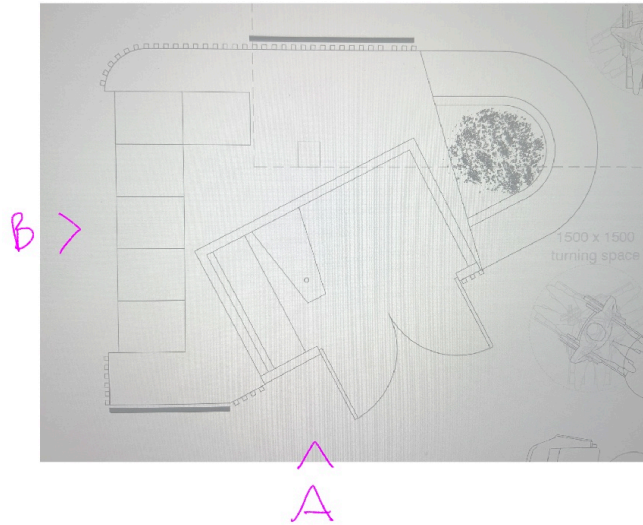


PROPOSED GROUND FLOOR LAYOUT
1:50

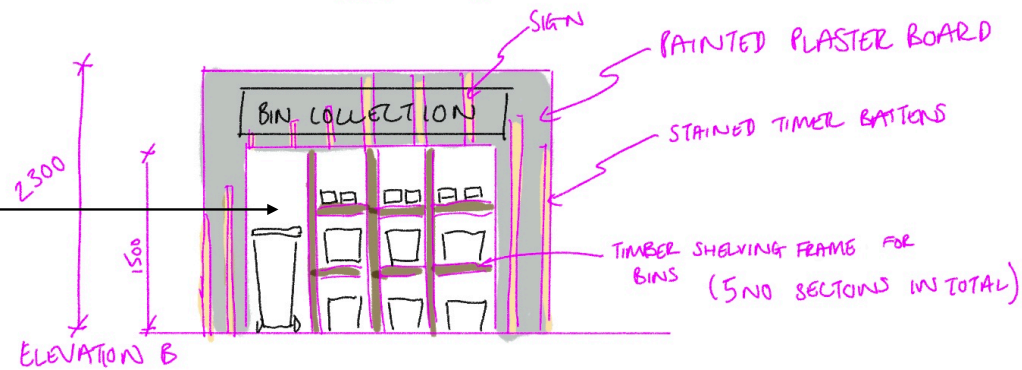
JOINERY ITEM 2
CENTER JOINERY ENCLOSURE TO INCLUDE A PERON BOOTH, INT SEATING + TABLE, BIN STORE, SOFT SEATING + PLANTER.)
ALL DIMENSIONS IN MM



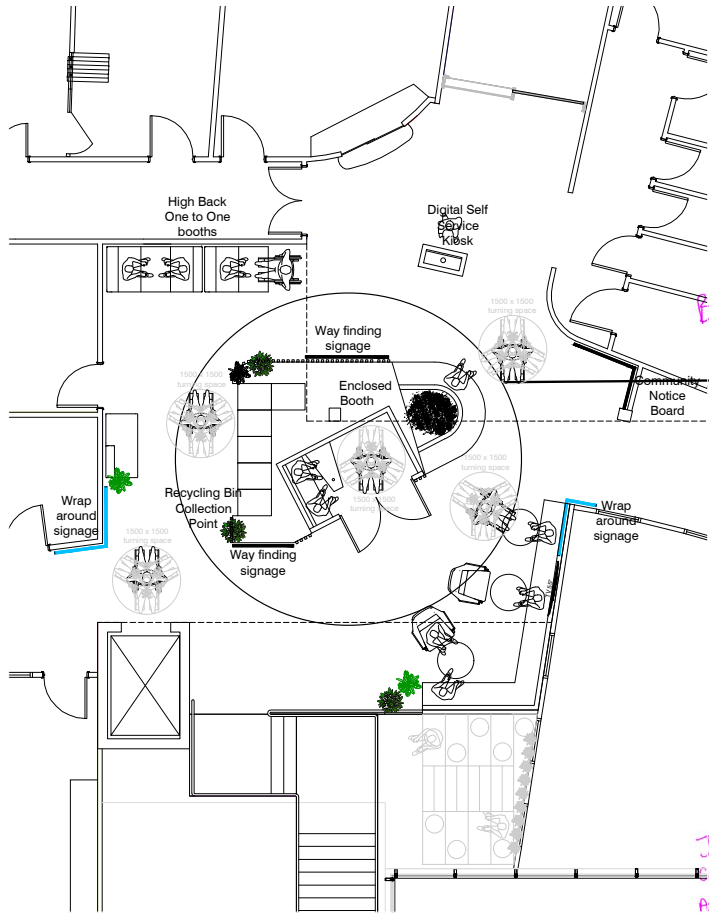
NOTE:
UN CAPPED
STRUCTURE
APART FROM
BOOTH INTERIOR



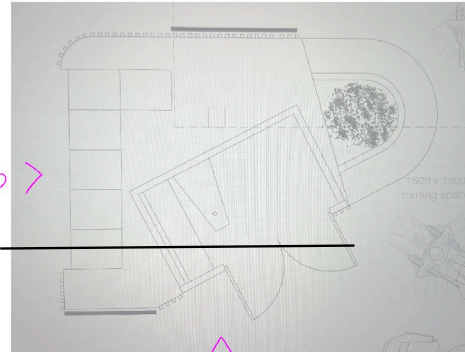
Bespoke artwork with information about the importance of recycle ♻️ and keeping Blaenavon tidy to the recessed back wall... Artwork to be developed



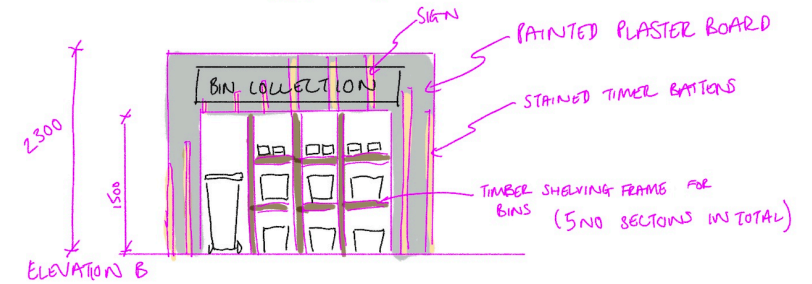
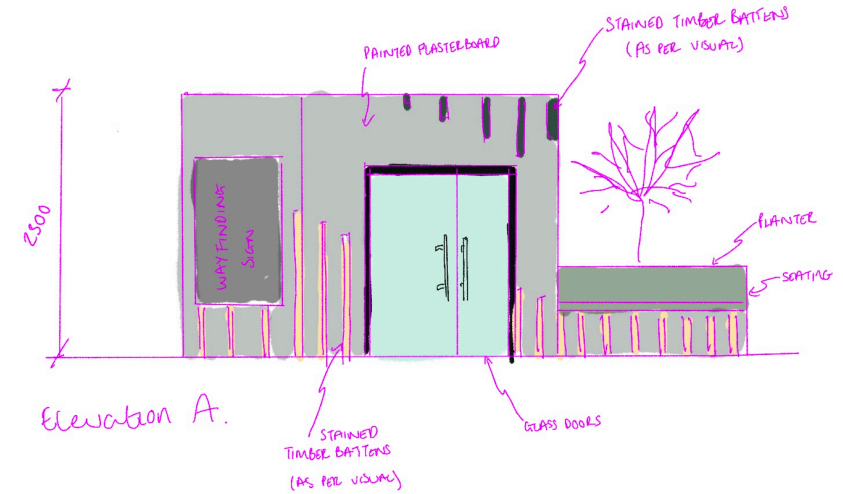
JOINERY ITEM 2
 CENTER JOINERY ENCLOSURE TO INCLUDE 4 PERON BOOTH, INT SEATING + TABLE, BIN STORE, SOFT SEATING + PLANTER)
 ALL DIMENSIONS IN MM



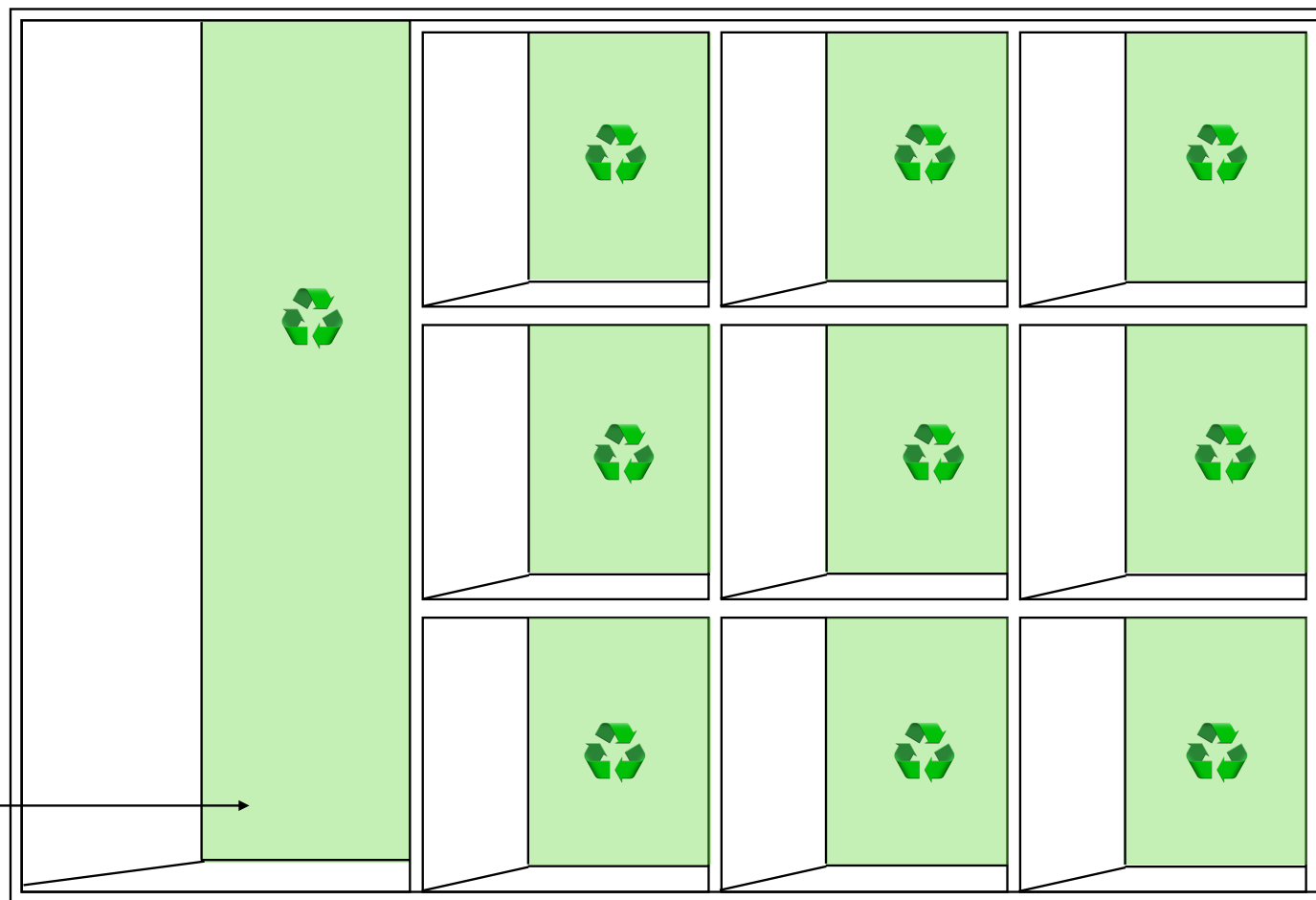
PROPOSED GROUND FLOOR LAYOUT
1:50



JOINERY ITEM 2
ENTER JOINERY ENCLOSURE TO INCLUDE 4 PERON BOOTH, INT SEATING + TABLE, BIN STORE, SOFT SEATING + PLANTER
ALL DIMENSIONS IN MM

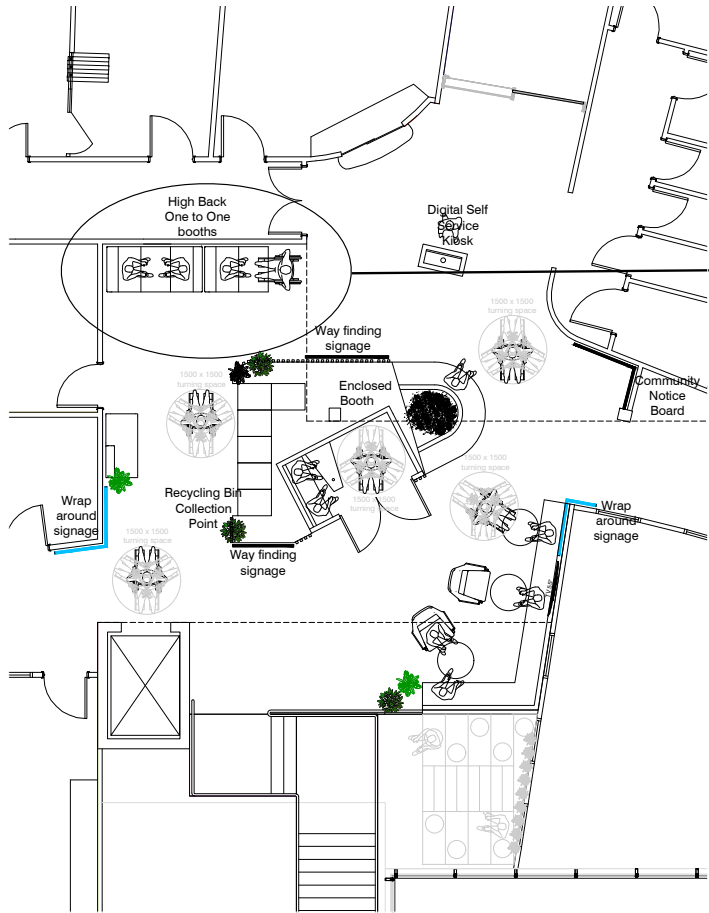


CARGO®



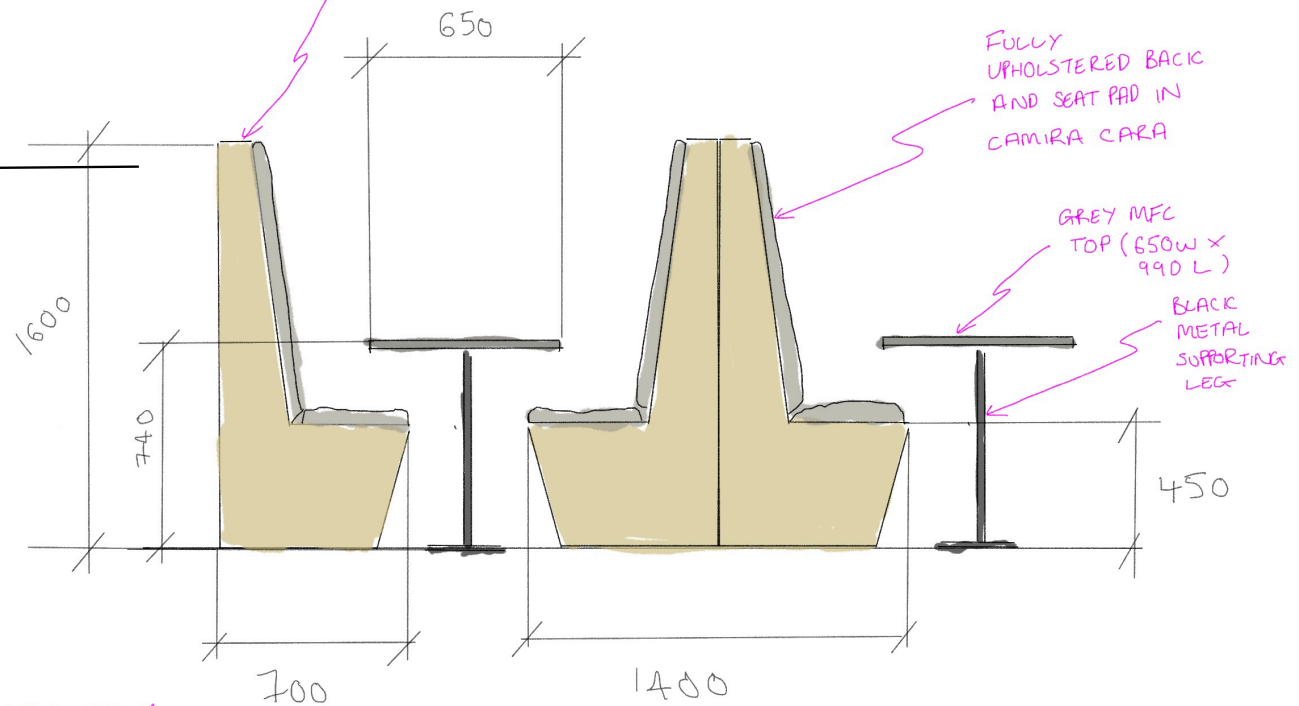
Bespoke artwork with information about the importance of recycle ♻️ and keeping Blaenavon tidy to the recessed back wall... Artwork to be developed

CARGO®



PROPOSED GROUND FLOOR LAYOUT
1:50

STAINED PLY CONSTRUCTION (700W x 990L x 1600 H)



JOINERY ITEM 1
ONE TO ONE HIGH BACK BOOTH SEATING SKETCH
ALL DIMENSIONS IN MM.

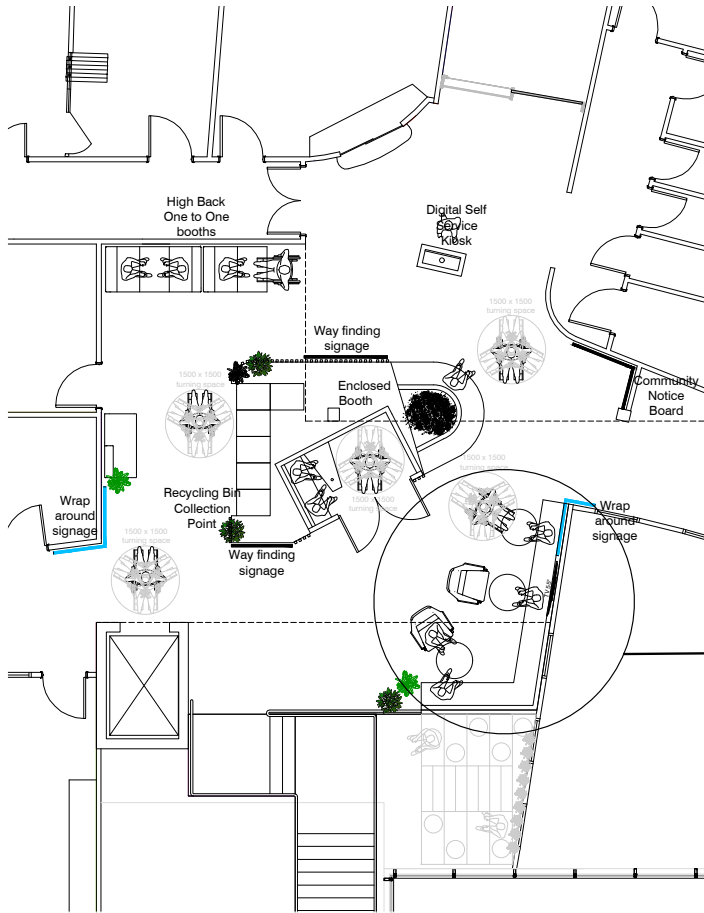


CARGO®

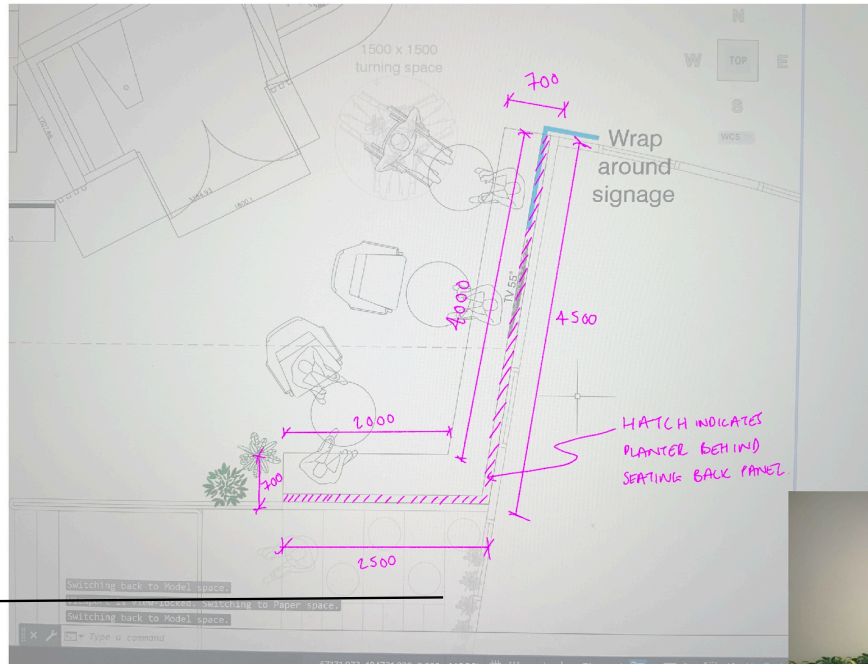
CARGO®

CARGO®

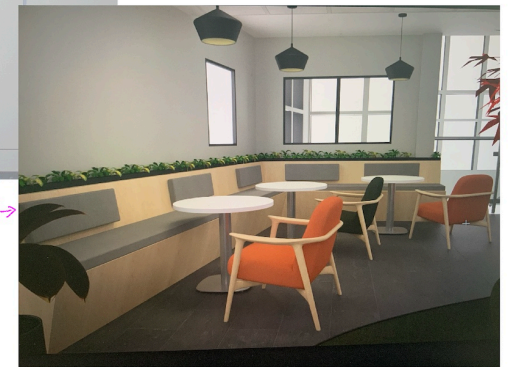
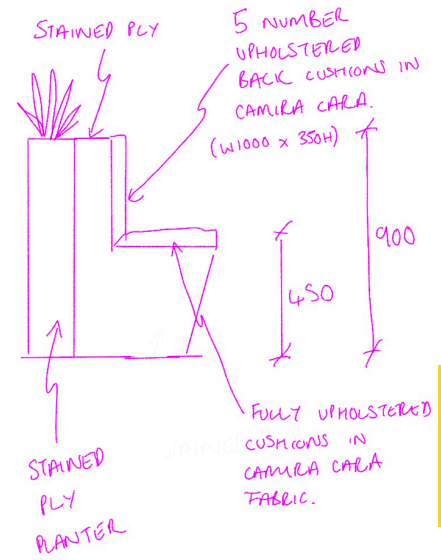
CARGO®



PROPOSED GROUND FLOOR LAYOUT
1:50



REF IMAGE→



JOINERY ITEM 3 BANQUETTE SEATING W/ INTEGRATED PLANTERS
ALL DIMS IN MM

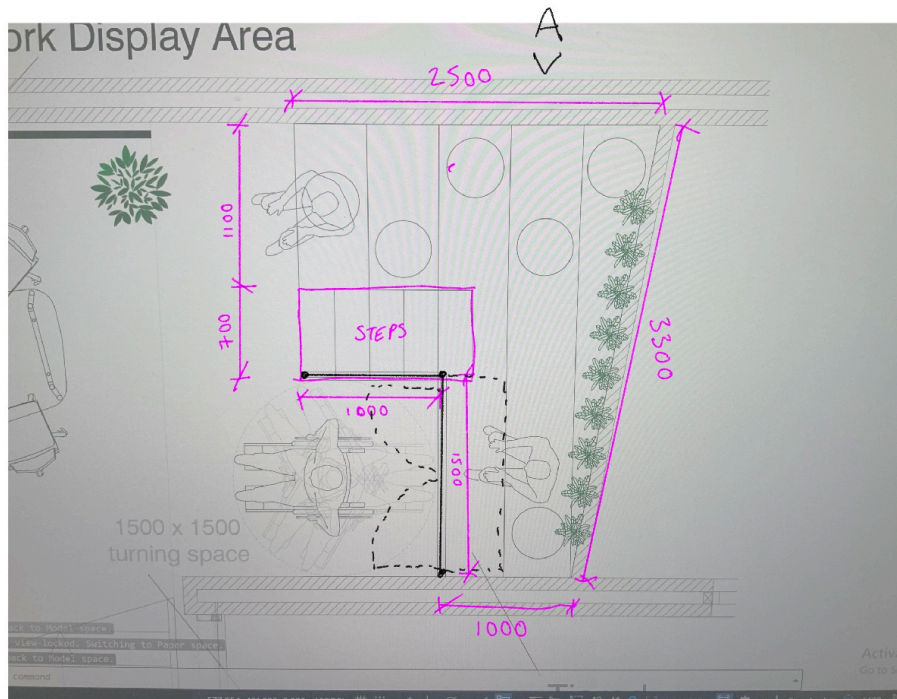
CARGO®



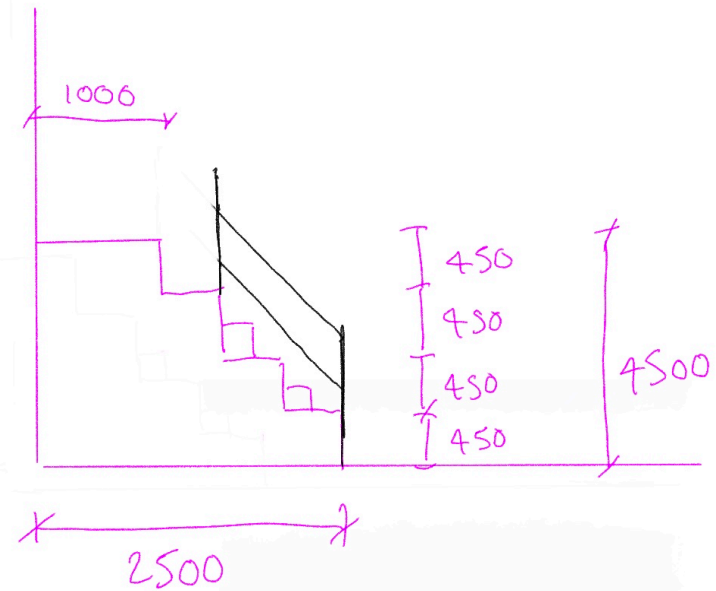
CARGO®

CARGO®

CARGO®



ELEVATION A.



- STAINED PLY STRUCTURE
- TO INCLUDE STORAGE CUP'D WITH DOORS
- + BLACK METAL HANDRAIL
- INCLUDE 7 NUMBER UPHOLSTERED CUSHIONS IN CAMURA CARLA FABRIC APPROX 400 x 400 mm.

JOINERY ITEM 4 - TIERED SEATING WITH DDA ACCESS AREA + INTEGRATED STORAGE
ALL DIMS IN mm

REF →
IMAGE



CARGO®

CARGO®

CARGO®

CARGO®